

Fair Education:

Engaging Families and Communities to Improve Student Outcomes





Acknowledgement of Country

We acknowledge the Traditional Custodians of the land on which we work and live, the Gadigal people of the Eora nation, and recognise their continuing connection to land, water and community.

We pay respect to Elders past, present and emerging.

About Schools Plus



Changing the education landscape

Schools Plus is a national charity. Our vision is that all young Australians reach their full potential through access to a great education.

We were formed after the 2011 Review of Funding for Schooling (the 'Gonski Review') called for a much stronger focus on philanthropy in education.

We help close the education gap caused by disadvantage, by connecting schools in need with donors who know the value of a great education.

We make it simple, effective and tax-deductible to give to schools that need the most support. Carefully targeted funding allows schools and teachers to give students extra support, or to trial new ways to improve learning.



Responding to need

Our support is directed to Australian schools that have a value below 1000 on the national Index of Community Socio-Educational Advantage (ICSEA). We make a determined effort to support schools at the lower end of this ICSEA scale, because they are the most in need. More than 4,600 schools across Australia (Government, Catholic and Independent) are eligible for support through Schools Plus.

Are you eligible?

- ✓ ICSEA value below 1000 on the Index of Community Socio-Educational Advantage (ICSEA).

See your school's profile at <http://www.myschool.edu.au/>

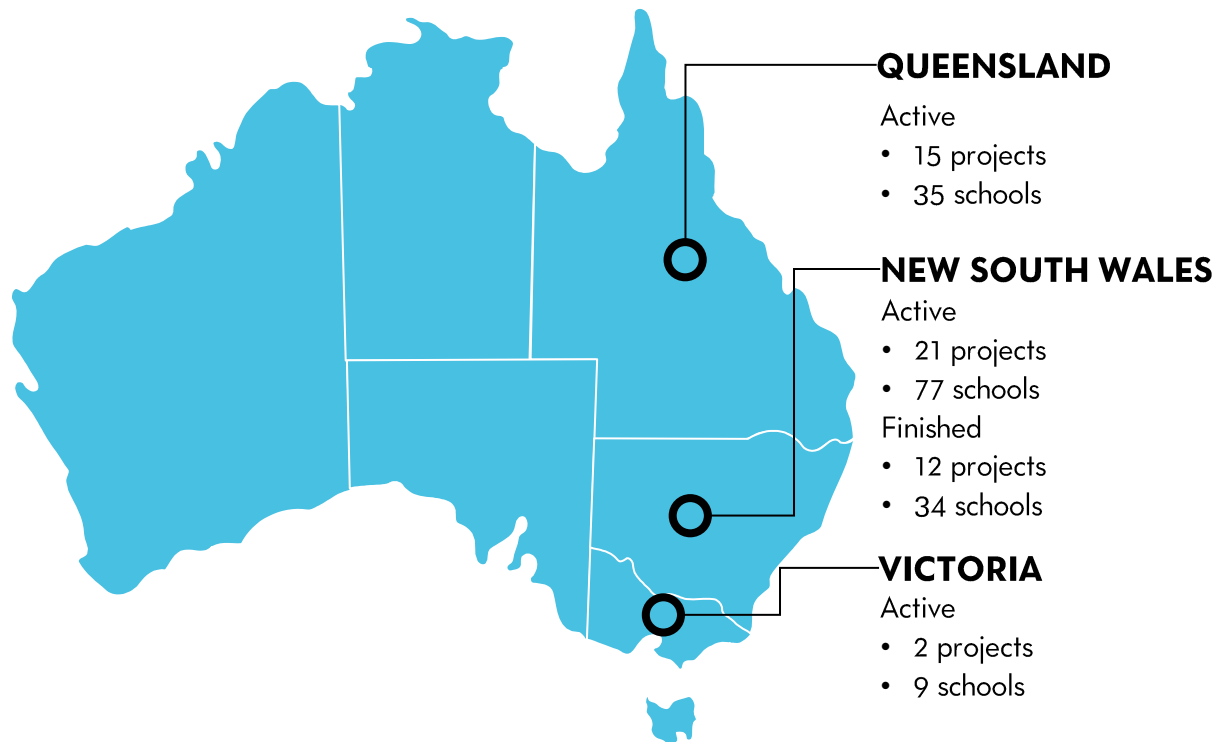
- ✓ Only one project per school or school cluster
- ✓ If your school has received funding through Schools Plus' Smart Giving (including Smart Giving Invitation), Commonwealth Bank Teaching Awards or Fair Education programs within the last 12 months please email Schools Plus at faireducation@schoolsplus.org.au to discuss your eligibility.

Fair Education develops the capacity of school leaders in high needs schools to better engage families and communities in student learning

FAIR EDUCATION (FE) GOALS

1. To build strategic capability of school leadership teams to promote family and community engagement
2. To improve family and community engagement in student learning
3. To improve the capacity of low SES schools to work together to generate real world learning environments
4. To enhance student learning outcomes

Fair Education is now working with over 140 schools in 3 States



40,000+
students

have or will benefit from
these projects

Focus of Fair Education

Family and
Community
Engagement
to improve
student
outcomes



Inputs are building the capability in schools to establish sound foundations and create conditions for success



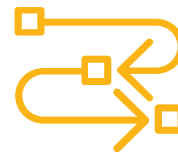
Funding

Dedicated, unrestricted funding allows appropriate level of tailoring the specifics of the project to the local context.



Coaching

Independent coaching simultaneously builds capability and unlocks creative localised solutions.



Program Management

Effective program management enables finetuning and balancing the customisation with effective implementation.



Evaluation

Tracking and evaluation unlocks further learning both in schools and the overall program.

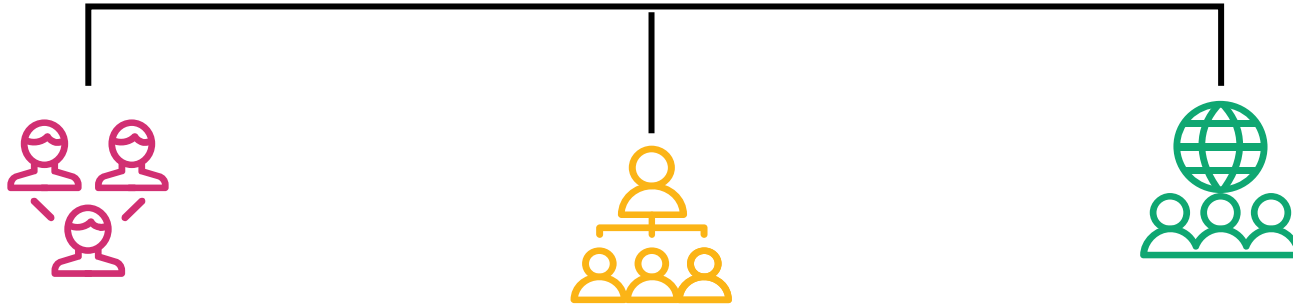
“

The money was there in the background to enable the project, but you can't enable anything if you don't have the coaching and the long-term nature of the project to get the thinking right to use your money well.

School leader in NSW

”

Intermediate outcomes are simultaneously benefits and ingredients for the final result



Family and community engagement

Improved family and community engagement is creating environment conducive to learning as well as increasing families' stakes in their children's educational outcomes by providing insights into specific school context.

School leadership capability

Increased School leadership capability improves both administrative and educational outcomes reducing reliance on the department while improving learning.

Community of practice

Building a community of practice ensures that the learning and approaches are shared and staff have a reference point for implementing projects aligned with Fair Education principles. It helps ensuring sustainable results.

“

We have had much better success with the parents of some of our really disengaged kids; they are starting to trust us more and they will have conversations with us. [...] Families that are difficult to contact are now coming in because they can see that we are investing time in their kids

School leader

”

Ultimate success is improving student outcomes



Examples of the types of Fair Education Projects

- Involvement of parents in school life
- Improved transitions
- Development of student social-emotional skills
- Improvement in communication with families
- Implementation of applied/ project-based learning

Fair Education Grants – Successful Projects

- Learning project (less event or resources)
- We are keen to support innovative projects that trial new designs or strategies that have a sound research base and the potential for significant transformational change.
- The project can extend an existing school initiative that is having a proven impact or it could replicate projects where existing strategies are being tried in a new location or with a new group.
- Projects should align closely with the school's strategic plan and future direction
- For projects applying as a cluster of schools the selection panel will be looking for established relationships and demonstration of how you have collaborated together

Responding to events of 2020 – now is a moment to consider the impacts and utilise the opportunities

Describe the level and extent of family and community engagement you currently have in your school/cluster.

Describe how this changed in response to the events of 2020?

- Consider what opportunities exist for families and communities to engage in and support student learning? How often do you provide these opportunities?
- Who participates in these opportunities?



Family and Community Engagement

Questions 3-6 are all about Family and Community Engagement initiatives and project scope. Helpful resources to consider in your application are:

> **Parent and Family Engagement Implementation Guide for School Communities**

Australian Research Alliance for Children and Youth

<https://www.aracy.org.au/publications-resources/area?command=record&id=302&cid=6>

> **The Family-School Partnerships Framework**

Australian Government: Department of Education

<https://www.education.gov.au/family-school-partnerships-framework-1>

> **Parental engagement**

Evidence for Learning

<https://www.evidenceforlearning.org.au/the-toolkits/the-teaching-and-learning-toolkit/all-approaches/parental-engagement/>

> **Evidence Informed Parental Engagement**

Teacher Magazine

<https://www.teachermagazine.com.au/articles/evidence-informed-parental-engagement>

> **Partners Education in A Dual Capacity-Building Framework for Family-School Partnerships**

Karen Mapp at Harvard Graduate School of Education

<https://www.gse.harvard.edu/hgse100/story/improving-our-schools-one-family-time>

Fair Education: How it works

HOW IT WORKS



Funding

Three year project funding for individual schools or school clusters.

- Up to \$70,000 for individual schools
- Up to \$250,000 for clusters



Coaching

Provision of coaching and leadership development for the project leadership team each term for the life of the project

> Funding instalments will be broken down into the following annual payments:

Individual School Projects

Year One:	Up to \$30,000
Year Two:	Up to \$20,000
Year Three:	Up to \$20,000

Cluster of School Projects

Year One:	Up to \$100,000
Year Two:	Up to \$75,000
Year Three:	Up to \$75,000

Fair Education Funding

The size and complexity of schools and clusters will be taken into consideration by the assessors.

Expenditure item	Describe how the Fair Education funding will be used	Amount (\$)
Salary – teacher release		
Salary - employment		
Consultants/Expert fees		
Teacher activities (training, etc)		
Student activities (excursions, etc)		
Equipment/furniture		
Workshops/programs		
Materials/resources		
Technology (iPad/laptop, etc)		
Transport/Travel/Accommodation		
Other (Parent/Community)		

The Application

Fair Education NSW 2020



Start a
submission



Preview
the form



Download
preview form

IMPORTANT: Please read information below to assist you in completing your application online.

BEFORE YOU BEGIN

Welcome to the Schools Plus online grant application service, powered by [SmartyGrants](#).

You may begin anywhere in this application form. Please ensure you save as you go.

For queries about the guidelines, deadlines, or questions in the form, please contact us on (02) 8318 1412 during business hours or email faireducation@schoolsplus.org.au and quote your submission number.

Click here https://www.schoolsplus.org.au/wp-content/uploads/2020/06/Fair-Education-Program-Guidelines_NSW-2020.pdf to view the guidelines.

If you need more help using this form, download the [Help Guide for Applicants](#) or check out [Applicant Frequently Asked Questions \(FAQ's\)](#)

Smarty Grants is the grant management platform. The direct link to apply for this round is:
<https://schoolsplus.smartygrants.com.au/FairEducationNSW2020>

Timeline after the application is submitted

1. Assessors will assess all submitted Applications
2. Projects starting in Term 1, 2021 will be notified in late September to determine which projects proceed to the next round
3. Shortlisted Schools will have a phone interview scheduled to gather additional details of the project in late October
4. The external panel of assessors will meet in late November
5. Final selection of successful projects for funding
6. Outcomes for all applications confirmed end of Term 4 2020
7. Project Co-design sessions and funds distributed to successful projects for Project Term 1, 2021. Successful schools have access to our team of education experts to provide support on project design, delivery and evaluation.

Application support and how to apply

Round is open now

Applications close: Friday September 11 at midnight AEST.

An education expert is available to help guide you with your application for Fair Education funding. Please contact the Fair Education team at faireducation@schoolsplus.org.au to arrange a time to connect.

Please see the Fair Education website for more information, view guidelines and for the link to apply: <https://www.schoolsplus.org.au/for-schools/fair-education-program/>

Smarty Grants is the grant management platform. The direct link to apply for this round is:

<https://schoolsplus.smartygrants.com.au/FairEducationNSW2020>



Questions from the chat



Key contacts:

[Any enquires: faireducation@schoolsplus.org.au](mailto:faireducation@schoolsplus.org.au)

Fair Education phone: 02 8318 1412

Karen Robertson | Director Fair Education Program

Emma Davidson | Fair Education Program Manager NSW

Australian Schools Plus



Schools Plus 