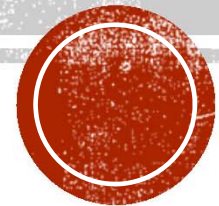


AUSTRALIAN COUNCIL OF STATE SCHOOL ORGANISATIONS

PROTECTING CHILDREN & YOUTH ONLINE





KEY FINDINGS

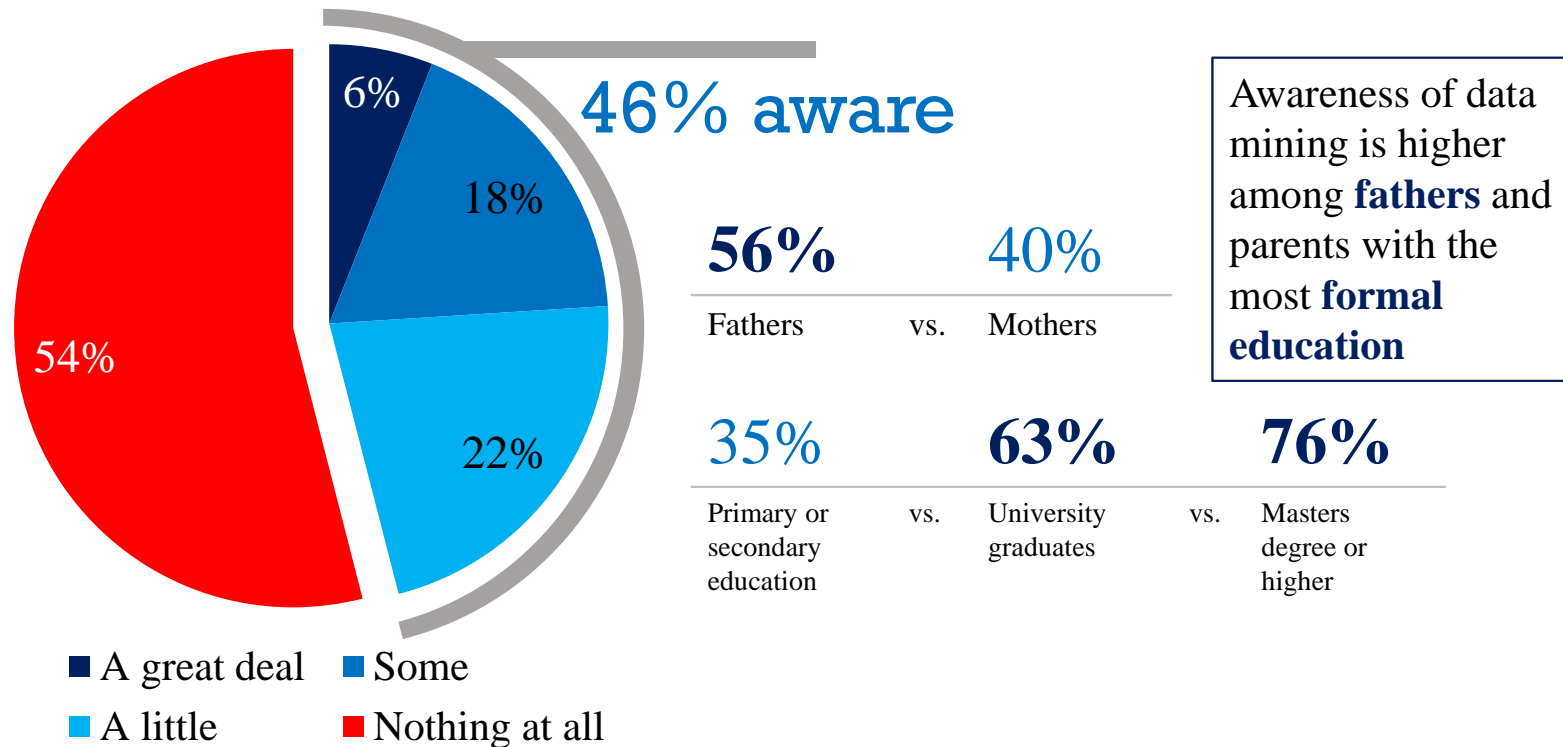
Parents expect major benefits from cloud services provided to children in schools. Australian parents expect that cloud services provided in school such as email and document collaboration will help their children acquire the skills and problem-solving abilities they will need in the 21st Century economy.

Parents don't want commercial data mining or online advertising in schools. While most parents in Australia are not aware that some cloud providers could “data mine” children’s email and web browsing for ad targeting purposes, they overwhelmingly object to the practice once informed.

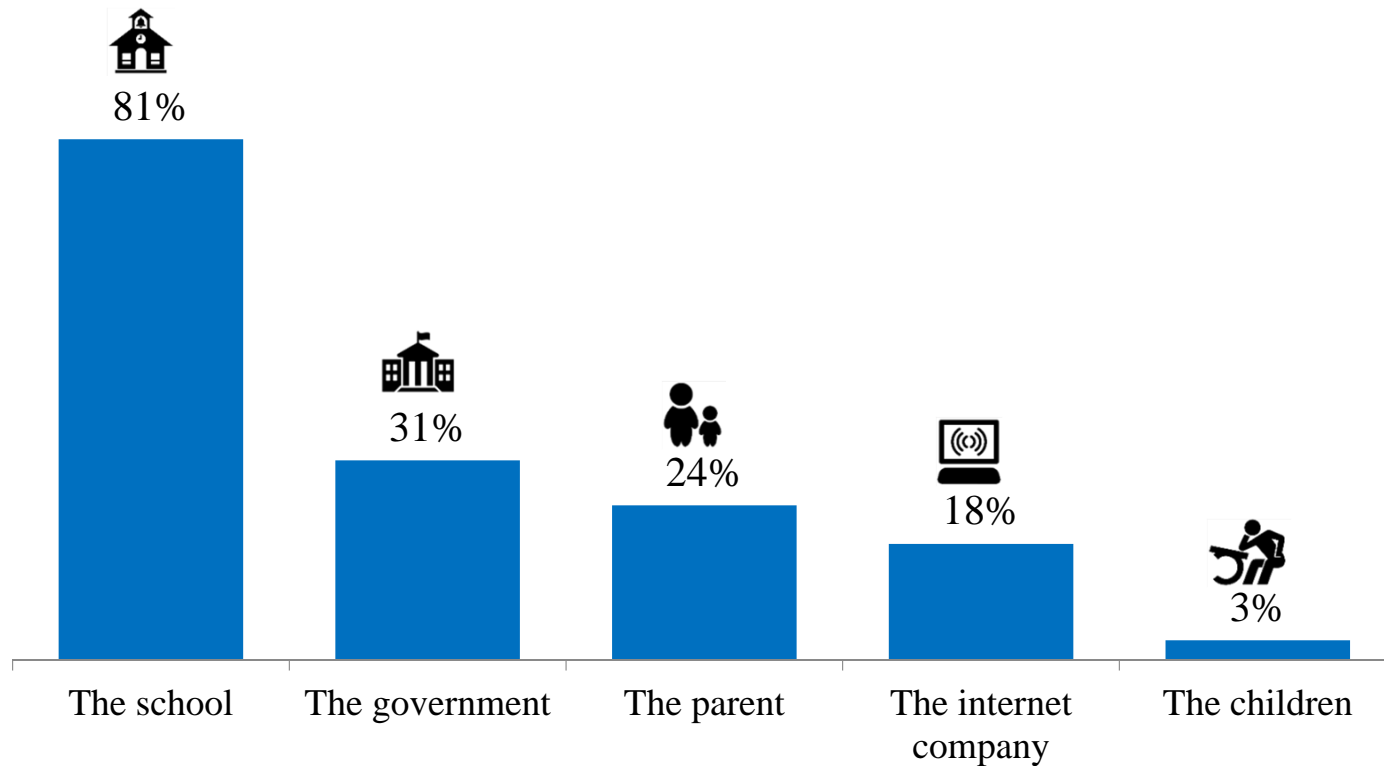
Australian parents expect that cloud services provided at school such as email and document collaboration will help their children acquire the skills and problem-solving abilities they will need in the 21st Century economy.



MOST PARENTS ARE NOT AWARE OF DATA MINING; ONLY 1 IN 17 PARENTS HAVE HEARD “A GREAT DEAL” ABOUT THE PRACTICE



PARENTS HOLD SCHOOLS RESPONSIBLE FOR PROTECTING THEIR CHILDREN'S ONLINE PRIVACY WHILE IN SCHOOL



**PARENT/FAMILY ENGAGEMENT IS ESSENTIAL
TO UNDERSTAND THE ROLES IN THIS AREA**



HOW TO DEVELOP, BUILD & OR SUSTAIN EFFECTIVE INITIATIVES

Family engagement strategies, initiatives and programs are

- highly contextual
- multi dimensional(breadth and depth think upside down triangle) and
- participated in by both staff and families with varying abilities

What works for one learning environment will be ineffective at another and approaches can be low level, right through to high impact, depending on the approach and ability.



CREATING A WELCOMING ENVIRONMENT

1

Its about relationships, relationships, relationships

- Conduct a friendliness audit
 - How does the learning environment- look, feel and sound
 - Is the learning environment easily accessible- is there signage
 - Do the staff smile, respect and welcome families into the learning environment
 - Is communication effective
- Are there processes and policies which recognise family input into the educative process?
- Customer service 101 – why do you return to businesses?



WHAT IS IT THAT YOU ARE WANTING?

Do we need more families to be involved/engaged at our school?

2

What is it that you are asking?

Involvement or Engagement?

These 2 words have been used interchangeably however they are different in regards to level of impact



INVOLVEMENT



Family involvement is a common vehicle for bringing teachers and families together in schools and tend to be directed by the school:

- attempts to involve families in school activities
- the school continues to set the agenda and determine what roles families are to play within that agenda,
- focus is placed on what families can do to help the school



ENGAGEMENT AT IT'S PINNACLE



Family engagement is an alternative way to bring teachers and families together in schools.

- Educators and families create a shared world on the ground of school
- Engagement in education has the greatest impact

This just doesn't happen!

- Engaging families in formal education requires a strategic approach:
 1. The belief that families play a vital role in learning and schooling
 2. Family engagement must be embedded into policy
 3. Series of actions and operations and procedures that are part of any initiative



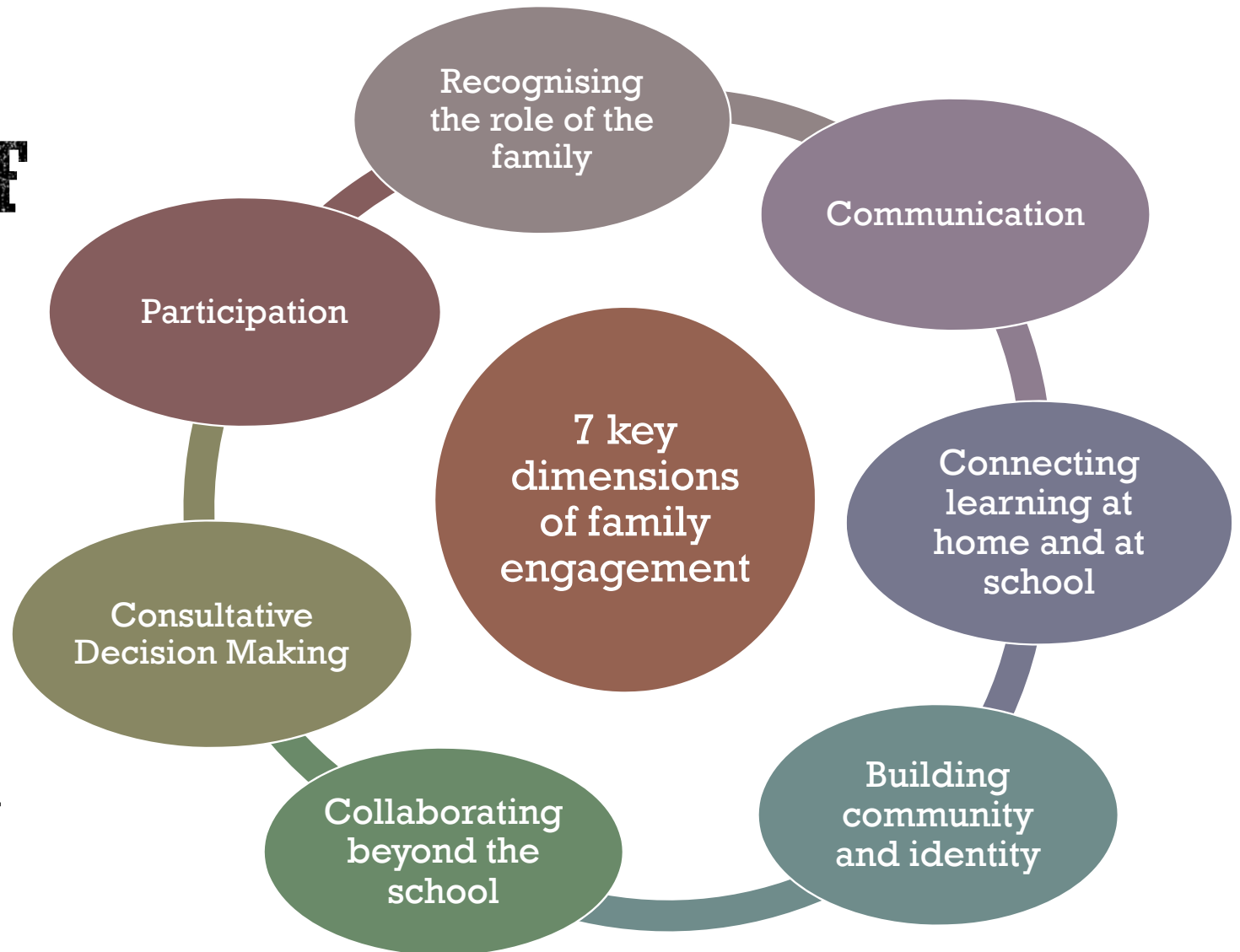
3 TEACHERS AND SCHOOLS HAVE VARYING LEVEL OF ABILITIES FOR ENGAGEMENT AND SO DO FAMILIES

The key is to ensure

- the upskilling of all
- using a variety of strategies
- reflecting on strategies



FOCUS AREAS OF FAMILY ENGAGEMENT



Effective schools use an interrelated approach



4

CORE COMPONENTS OF ANY FAMILY ENGAGEMENT STRATEGY OR INITIATIVE



POINTS TO REMEMBER

- Relationships, relationships, relationships and respect without this you have nothing
- Our core focus of family engagement is about improving student learning always link your initiatives towards the learning

